



EMSA's support during COVID-19

Naples Shipping Week

Andrea Tassoni
Head of Executive Office

Video conference / 2 October 2020





EMSA developed the following services:

- COVID-19 Member States measures
- Guidelines for cruise EMSA-ECDC
- EMSA cruises monitoring activity
- Statistics on impact of COVID-19 on shipping traffic report

COVID-19 Measures



The COVID-19 outbreak is affecting the lives and work of people in the EU and all across the globe. At this time, it is extremely important that those authorities responsible for ensuring the safe transportation of goods and people on board a vessel are fully aware of the preventive measures adopted by each EU Member State and EFTA country. For this reason, EMSA has created a single point of reference which lists the information per country as supplied by them. The accuracy of the information is therefore dependent on the information provided by the EU Member State and EFTA country concerned.

COVID-19 Measures

Guidance for Cruise Ship Operations

European Maritime Safety Agency



COVID-19: EU Guidance

for Cruise Ship Operations

Guidance on the gradual and safe resumption of operations of cruise ships in the European Union in relation to the COVID-19 pandemic

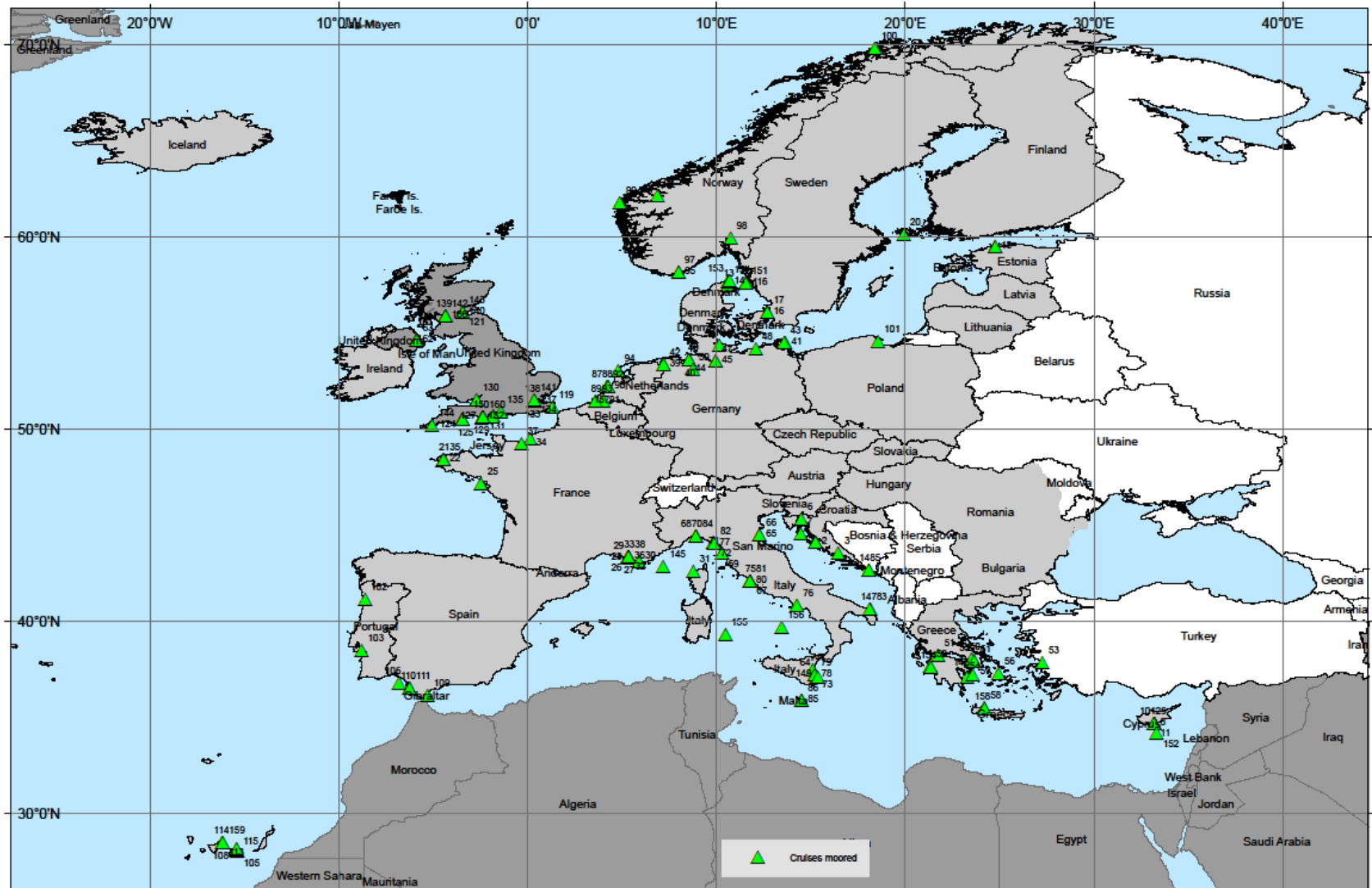
EMSA – cruise monitoring activities



European Maritime Safety Agency

Maritime Support Services

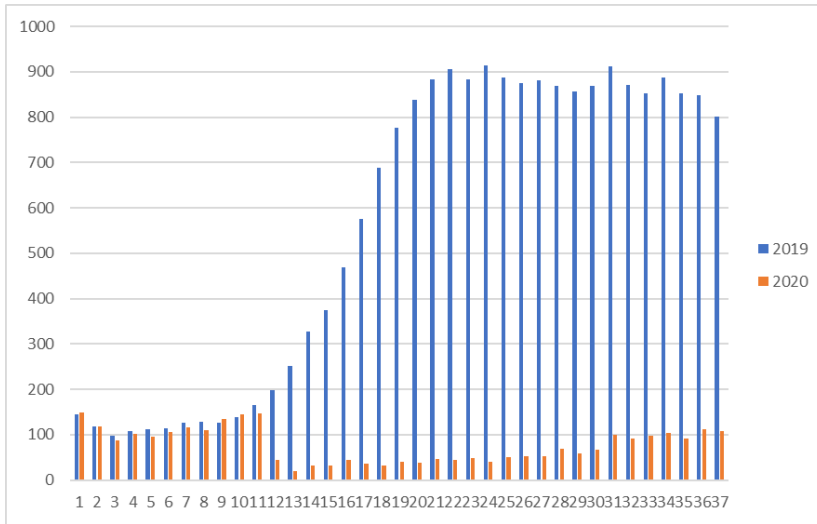
Date: 11/09/2020



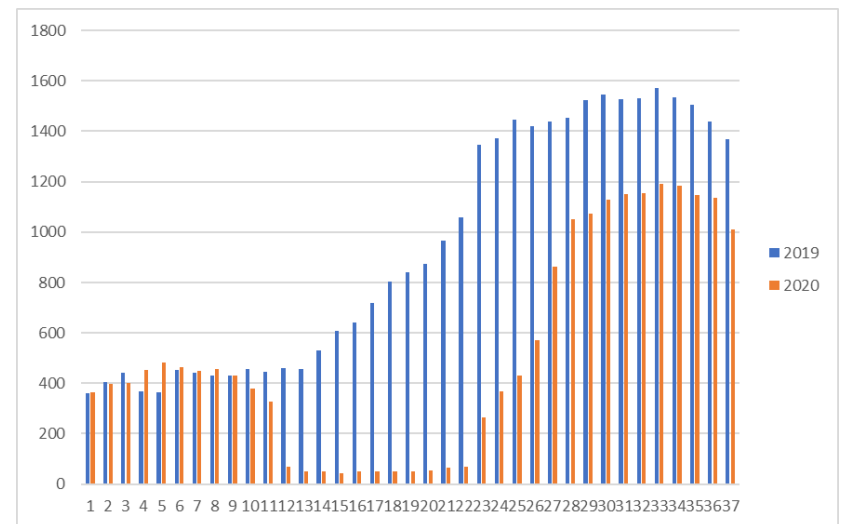
Ship calls at EU ports – per ship type



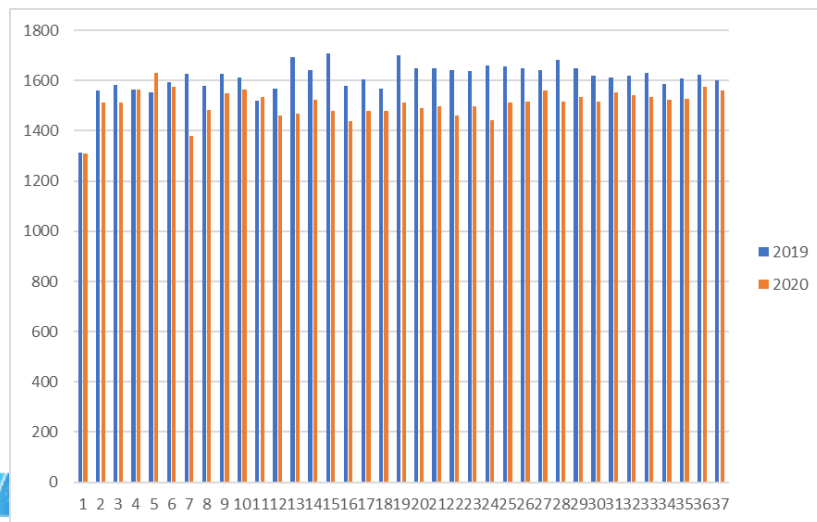
Cruise ships



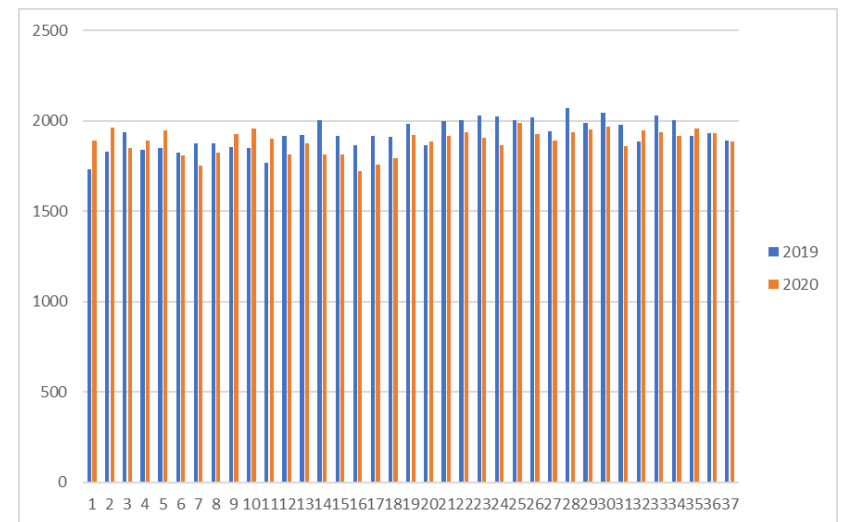
Passenger ships



Container ships



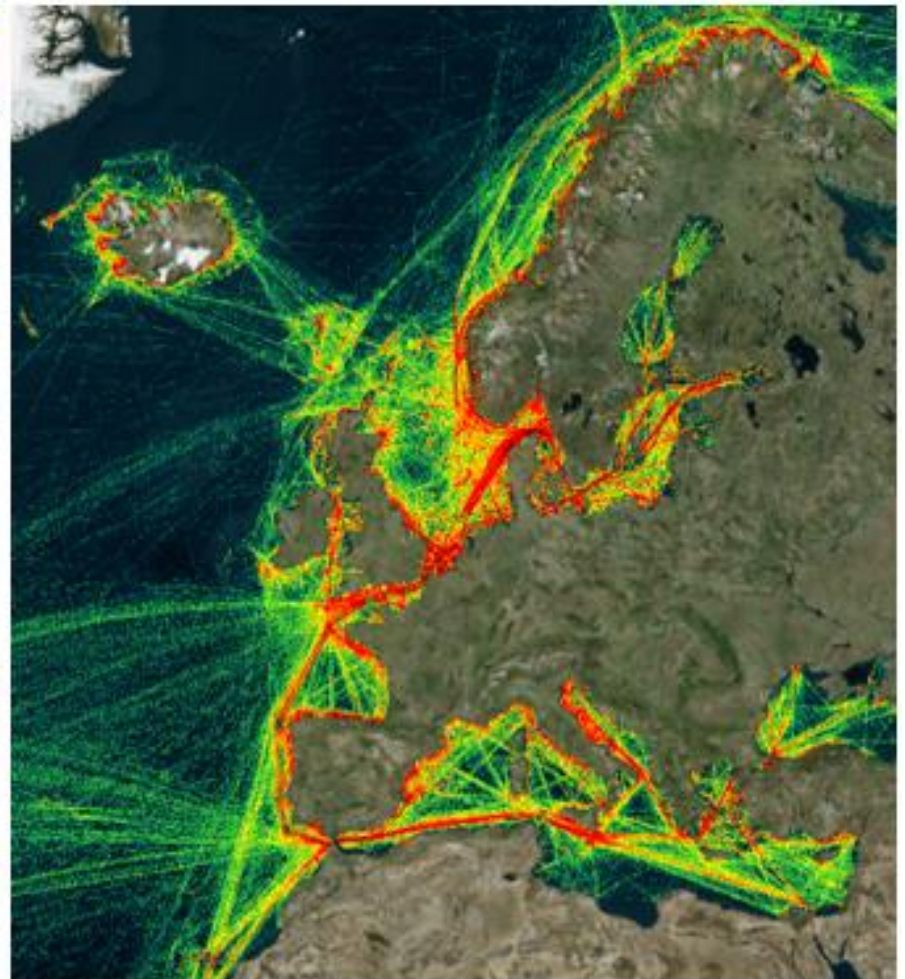
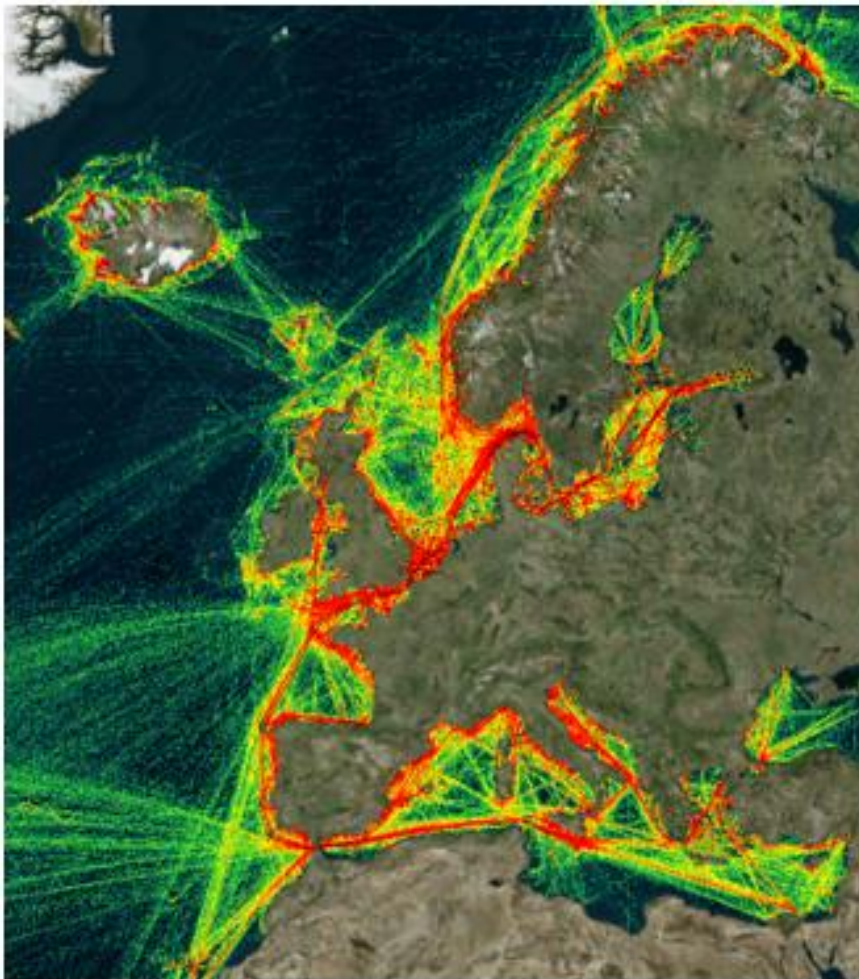
Oil tankers



Impact on vessel traffic density



All Traffic (May 2019 vs. May 2020)





emsa.europa.eu

 twitter.com/emsa_lisbon

 facebook.com/emsa.lisbon

 **EMSA**
European Maritime Safety Agency

Guidance for Cruise Ship Operations



Guidance in addressing the risks identified related to the COVID-19 pandemic with a view to resuming cruise operations in the EU/EEA without compromising safety

Aimed at EU/EEA flagged ships in international voyages and at ships irrespective of the flag calling EU/EEA port

Based on objectives (goal-based approach)

Not prescriptive, not a compendium

Tool to assist with implementation and verification (both internal and external)

Addresses cruise companies, terminals, Flag States and Port States